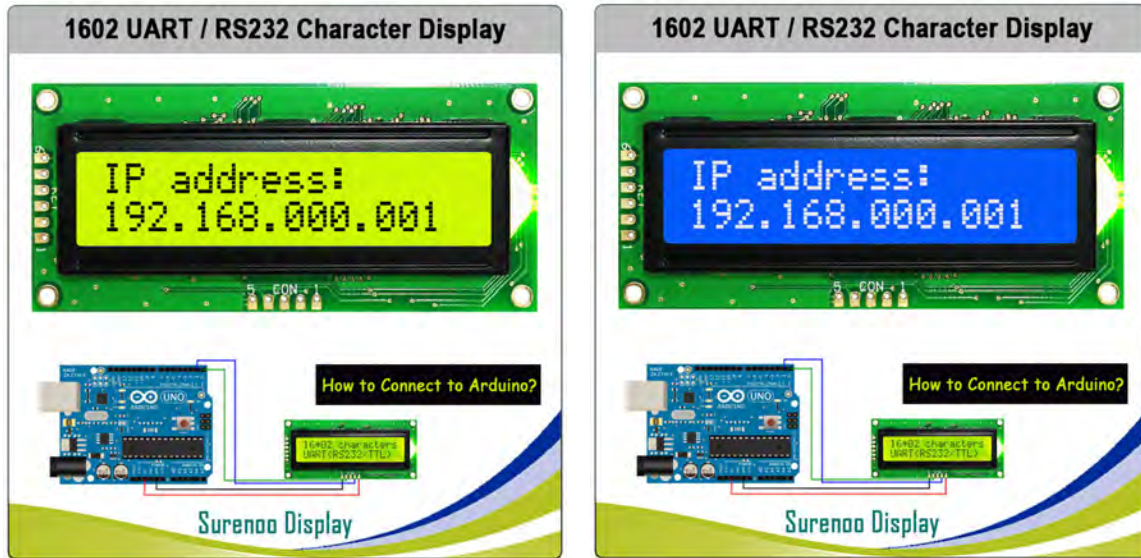




SLC1602F Series LCD MODULE USER MANUAL

Please click the following image to buy the sample



Shenzhen Surenoo Technology Co.,Ltd.
www.surennoo.com
Skype: Surenoo365

Reference Controller Datasheet

Character LCD Selection Guide

Reference Files



SLC1602F_TOOL



Arduino_SLC1602F



CONTENTS

1. ORDERING INFORMATION	04
1.1 1602F Series Table-	04
1.2 1602F Series Image-	05
2. SPECIFICATION	06
2.1 Display Specification-	06
2.2 Mechanical Specification	06
2.3 Electrical Specification	06
2.4 Optical Specification	06
3. OUTLINE DRAWING	07
4. ELECTRICAL SPEC	08
4.1 Pin Configuration	08
4.2 Absolute Maximum Ratings	08
4.3 Electrical Characteristics	08
5. Applications	09
6. Keypad Scan	09
7. Applications	10
8 Keypad Scan	10
9.Custom character — — —	11
10 INSPECTION CRITERIA	12
10.1 Acceptable Quality Level	12
10.2 Definition of Lot	12
10.3 Condition of Cosmetic Inspection	12
10.4 Module Cosmetic Criteria	13
10.5 Screen Cosmetic Criteria (Non-Operating)	15
10.6 Screen Cosmetic Criteria (Operating)	16



11. PRECAUTIONS FOR USING	18
11.1 Handling Precautions	18
11.2 Power Supply Precautions	18
11.3 Operating Precautions	19
11.4 Mechanical/Environmental Precautions	19
11.5 Storage Precautions	19
11.6 Others	19
12. USING LCD MODULES	20
12.1 Liquid Crystal Display Modules	20
12.2 Installing LCD Modules	20
12.3 Precaution for Handling SUR Modules	21
12.4 Electro-Static Discharge Control	21
12.5 Precaution for Soldering to LCM	21
12.6 Precaution for Operation	22
12.7 Limited Warranty	22
12.8 Return Policy	22



1. ORDERING INFORMATION

1.1 SLC1602F Series Table

SURENOO CHARACTER DISPLAY										
Model No.	Interface	Display	Outline Size (MM)	Viewing Area (MM)	Area Area (MM)	Voltage (V)	Controller	Mark	Color Code	IMAGE
SLC1602F	CMOS	16*02	80.00*36.00	64.50*14.50	55.70*11.00	5.0V	-	CMOS/RS232	YGVCT	
	ELWCT									
RS232	YGVRT									
ELWRT										



1.2 SLC1602F Series Image

*The number of series image is in accordance with number of the above series table 1.1.





2. SPECIFICATION

2.1. Feature

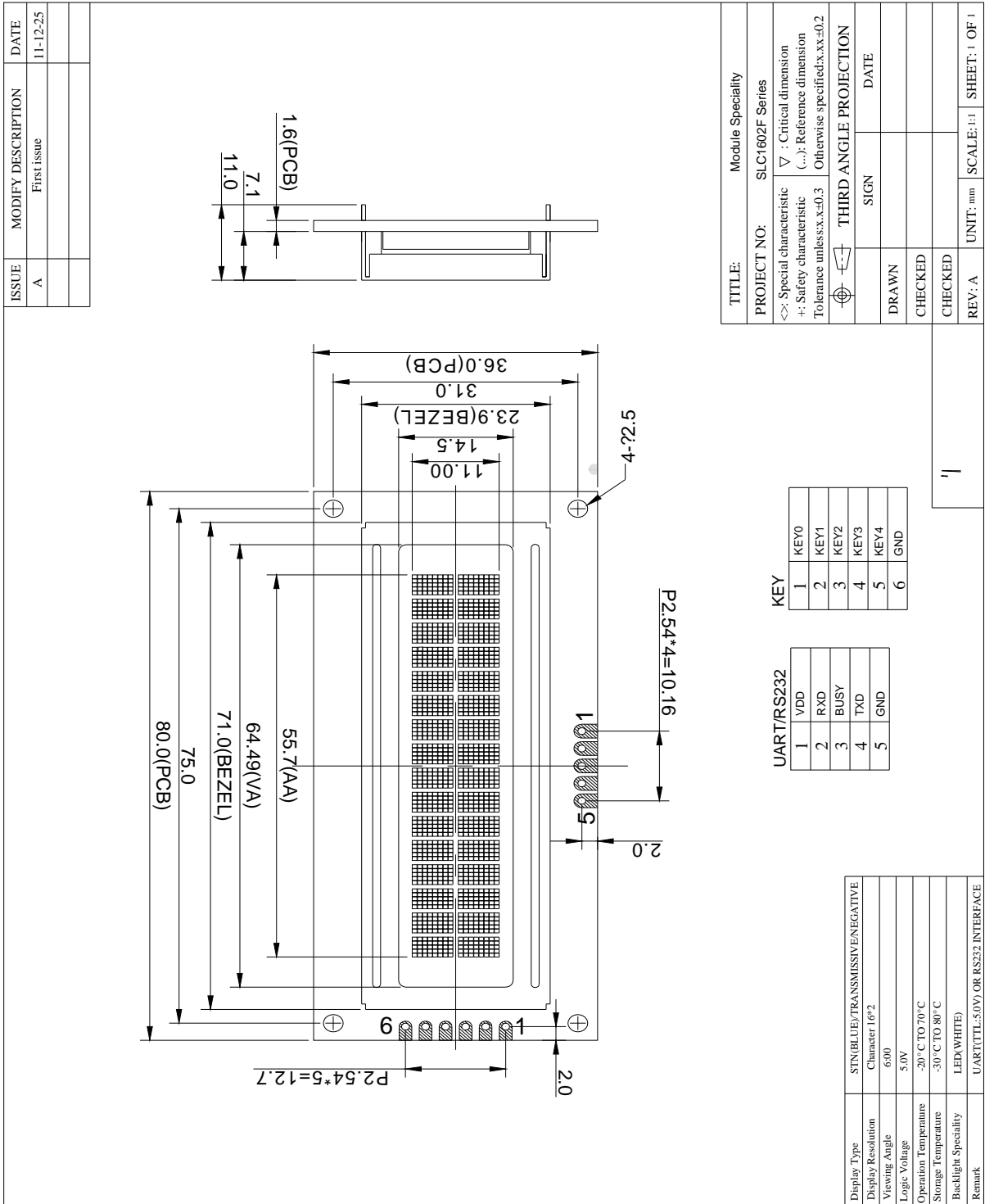
- 16 column by 2 line text display
- Yellow-Green(STN YG)/White LED (STN Grey or Blue)backlights
- Built-in ASCII fonts and CGRAM for users to customize characters
- Supports Software controlled brightness
- Supports 5 keys keypad-scan
- Serial Interface:UART(RS232/CMOS)
- Operating Voltage:5.0±0.1
- Operating Temperature:-20~70℃
- Storage Temperature: -30~80℃

2.2. Mechanical Characteristics

Items	Specification	Unit
Dimensions	80.0(L)*36.0(W)*11.0(H)	mm
Visual Area (VA)	64.49*14.5	mm
Active Area (AA)	55.7*11	mm
Pixel Size	0.54*0.6	mm
Pixel Pitch	0.05	mm
Weight	TBD	Grams



3. DRAWING





4. ELECTRICAL SPEC

4.1 Pin Configuration

4.1.1 Power and Communicate Interface

Pin No.	Symbol	I/O	Function Description
1	VDD	P	Power (+5.0V)
2	RXD	I	Receive data
3	BUSY	O	Busy Signal,High is busy.
4	TXD	O	Transmit data
5	GND	P	Ground

4.1.2 Keypad Scan Interface (Only supports keypad control products)

Pin NO.	Symbol	I/O	Function Description
1	KEY0	I	Keypad scan signal
2	KEY1	I	
3	KEY2	I	
4	KEY3	I	
5	KEY4	I	
6	GND	p	Ground

4.2 DCElectrical Characteristics (Ta= 25° C, VDD= 5.0V±5%, GND= 0V)

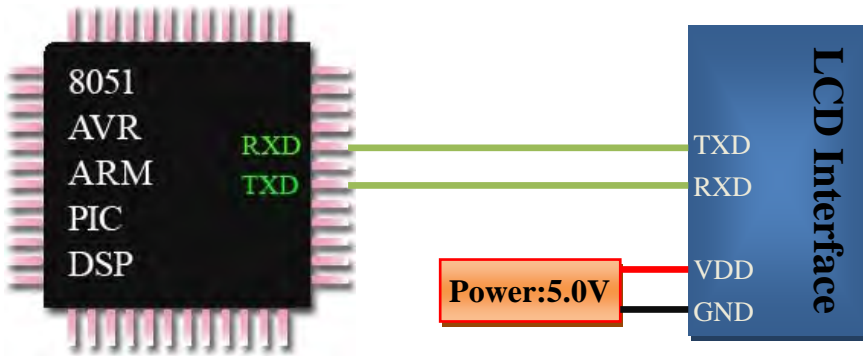
Item	Symbol	Conditon	Min.	Typ.	Max.	Unit
Supply Voltage	VDD	-	4.9	5.0	5.1	V
Supply Current	IDD	note1	12.0	-	50.0	mA
"H" Level input	Vih	UART(TTL)	0.8VDD	-	VDD	V
"L"Level input	Vil		0	-	0.25VDD	V
"H" Level output	Voh		0.8VDD	-	VDD	V
"L"Level output	Vol		0	-	0.25VDD	V
"H" Level input	Vih	RS232	-5	-	-12	V
"L"Level input	Vil		5	-	12	V
"H" Level input	Voh		-5	-	-12	V
"L"Level input	Vol		5	-	12	V

note1:Backlight brightness will affect the current size.

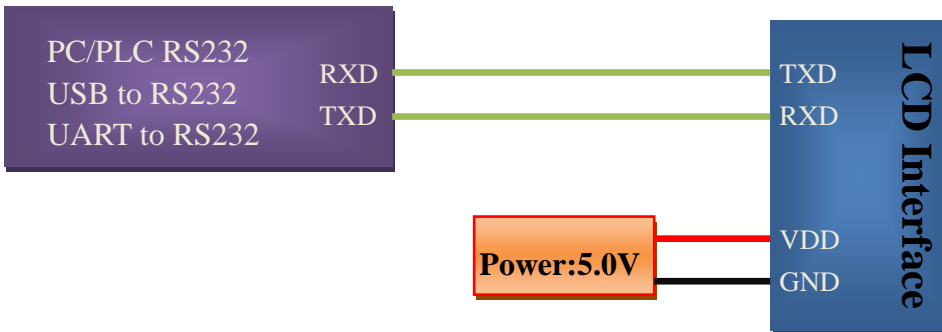


5. Applications

- UART(TTL:5.0V) ports,can communicate with the MCU. If the MCU operating vltage is 3.3V,Level conversion needs to be done.



- RS232 ports,can communicate with the PC or PLC.



6. Keypad Scan(Only support for keypad scanning products)

Refer to the figure-1,According to project requirements designed keyboard.When using the user presses a key,Module will automatically be sent keycode to the master.

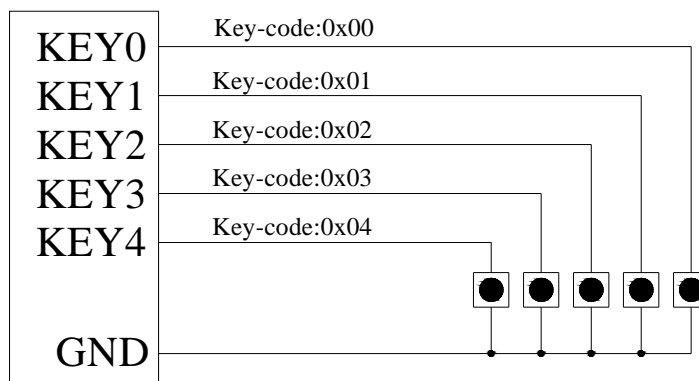


Figure-1 Keypad logic diagram



7. Communications

Type: UART(RS232/TTL: 5.0V)

Band Rate: 9600b/S

Data bits: 8bit

Parity bits: None

Stop bits: 1bit

8. Commands

8.1 Commands Table

Items	Display product information	0XAA ,0X00	-
Product information	Display product information	0XAA ,0X00	-
Reset	Product reset	0XAA ,0X01	-
System	Clear display	0XAA ,0X10	-
	Display on	0XAA ,0X11	-
	Display off	0XAA ,0X12	-
	Set Brightness	0XAA ,0X13	n(0~0XFF)
Text	Set cursor position	0XAA ,0X20	row,column
	Cursor on	0XAA ,0X21	-
	Cursor off	0XAA ,0X22	-
	Cursor blink on	0XAA ,0X23	-
	Cursor blink off	0XAA ,0X24	-
	Writing Text to the Display	0XAA ,0X25	d0,d1,d2,d3.....0X0d
	Define custom character	0XAA ,0X26	n,d0~d7
keycode output	Output user presses the keycode	0XAA ,0X55	n (keycode:0X00~0X04)

8.2 Commands Description

8.2.1 Display product information (0XAA 0X00)

Display product information.

8.2.2 Reset(0XAA 0X01)

Product Reset,Back to the initial state.

8.2.3 Clear display(0XAA 0X10)

Clear display,Cursor return.

8.2.4 Display on(0XAA 0X11)

Display on,the default state.

8.2.5 Display off(0XAA 0X12)

Display off.

8.2.6 Adjust the backlight brightness (0XAA 0X13 n)

n(0~0XFF),Backlight off when n=0.

8.2.7 Cursor position(0XAA 0X20 l,r)

Set cursor position,l(0~1),r(0~0X0F).

8.2.8 Cursor display on (0XAA 0x21)

Cursor display on.

8.2.9 Cursor display off (0XAA 0X22)

Cursor display off.

8.2.10 Cursor blink on (0XAA ID 0X23)



Cursor position blink on.

8.2.11 Cursor blink off (0XAA ID 0X24)

The Cursor position blink off.

8.2.12 Display character write(0XAA 0X25 d0,d1,d2...dn 0X0D)

Write the character to be displayed, d0~dn is character code(ASCII code),This command must be using 0X0D as terminator.

8.2.13 Load custom character(0XAA 0X26 n d0~d7)

n:(0~0x07),Custom character code, You can build 8 user-defined characters.

There is space for eight user - defined custom characters. This command loads the custom character into one of the eight locations. The custom character pattern is bit mapped into 8 data bytes. The bit map for Spanish character ‘¿’ is shown in table below. To display the custom character, user has to enter the address of the character (d0 to d8).

bit	7	6	5	4	3	2	1	0	hex
d0	0	0	0	0	0	1	0	0	0X04
d1	0	0	0	0	0	0	0	0	0X00
d2	0	0	0	0	0	1	0	0	0X04
d3	0	0	0	0	1	0	0	0	0X08
d4	0	0	0	1	0	0	0	0	0X10
d5	0	0	0	1	0	0	0	1	0X11
d6	0	0	0	0	1	1	1	0	0X0E
d7	0	0	0	0	0	0	0	0	0X00

8.2.14 KEY-code output(0XAA 0X55 n) (Only support for keypad scanning products)

This instruction is output instruction,n(0~0x04)is key-code.When a key is pressed, automatically through TXD to master send the relevant key-code.

9.Custom character

Built in 64 bytes CGRAM,For users to customize 8 characters.

9.1 Load custom character

Reference command 8.2.13.

	b7	b6	b5	b4	b3	b2	b1	b0
d0				1	1	1	1	0
d1				1	0	0	0	1
d2				1	0	0	0	1
d3				1	1	1	1	0
d4	-	-	-	1	0	1	0	0
d5				1	0	0	1	0
d6				1	0	0	0	1
d7				0	0	0	0	0

9.2 Display custom character

The user can display custom characters using the command 8.2.12.The parameter d0,d1,d2……rang is 0~0x07,you must load custom characters before the display.



10 INSPECTION CRITERIA

10.1 Acceptable Quality Level

Each lot should satisfy the quality level defined as follows

PARTITION	AQL	DEFINITION
A. Major	0.4%	Functional defective as product
B. Minor	1.5%	Satisfy all functions as product but not satisfy cosmetic stanard

10.2 Definition of Lot

One lot means the delivery quantity to customer at one time.

10.3 Condition of Cosmetic Inspection

◆ INSPECTION AND TEST

- FUNCTION TEST
- APPEARANCE INSPECTION
- PACKING SPECIFICATION

◆ INSPECTION CONDITION

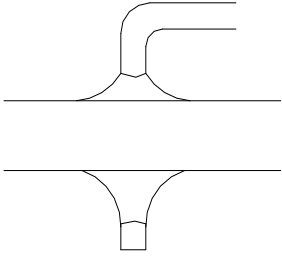
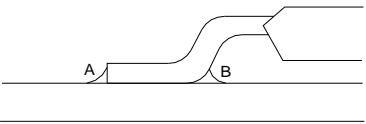
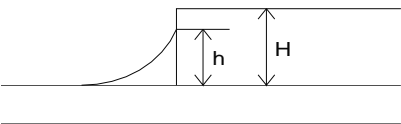
- Put under the lamp (20w λ 2) at a distance 100mm from
- Tilt upright 45 degree by the front (back) to inspect LCD appearance.

◆ AQL INSPECTION LEVEL

- SAMPLING METHOD: MIL-STD-105D
- SAMPLING PLAN: SINGLE
- MAJOR DEFECT: 0.4% (MAJOR)
- MINOR DEFECT: 1.5% (MINOR)
- GENERAL LEVEL: II/NORMAL



10.4 Module Cosmetic Criteria

NO.	Item	Judgment Criterion	Partition
1	Difference in Spec.	None allowed	Major
2	Pattern Peeling	No substrate pattern peeling and floating	Major
3	Soldering defects	No soldering missing	Major
		No soldering bridge	Major
		No cold soldering	Minor
4	Resist flaw on substrate	Invisible copper foil(\varnothing 0.5mm or more)on substrate pattern	Minor
5	Accretion of metallic Foreign matter	No soldering dust	Minor
		No accretion of metallic foreign matters(Not exceed \varnothing 0.2mm)	
6	Stain	No stain to spoil cosmetic badly	Minor
7	Plate discoloring	No plate fading,rusting and discoloring	Minor
8	Solder amount 1.Lead parts	<p>a. Soldering side of PCB</p> <p>Solder to form a 'Filet' all around the lead. Solder should not hide the lead form perfectly.(too much)</p> <p>b.Components side (In case of 'Through Hole PCB')</p> <p>Solder to reach the Components side of PCB</p> 	Minor
	2.Flat packages	<p>Either 'toe'(A) or 'heel' (B) of the lead to be covered by 'Filet'</p> <p>Lead form to be assume over Solder.</p> 	Minor
	3.Chips	<p>$(3/2) H \cong h \cong (1/2)H$</p> 	Minor



9	Backlight defects	1.Light fails or flickers.(Major) 2. Color and luminance do not correspond to specifications. (Major) 3.Exceeds standards for display's blemishes, foreign matter, dark lines or scratches.(Minor)	See list ←
10	PCB defects	Oxidation or contamination on connectors.* 2. Wrong parts, missing parts, or parts not in specification.* 3.Jumpers set incorrectly.(Minor) 4.Solder(if any)on bezel,LED pad,zebra pad,or screw hole pad is not smooth.(Minor) *Minor if display functions correctly.Major if the display fails.	See list ←
11	Soldering defects	1. Unmelted solder paste. 2. Cold solder joints,missing solder connections,or oxidation.* 3. Solder bridges causing short circuits.* 4. Residue or solder balls. 5. Solder flux is black or brown. *Minor if display functions correctly.Major if the display fails.	Minor



10.5 Screen Cosmetic Criteria (Non-Operating)

No.	Defect	Judgment Criterion	Partition	
1	Spots	In accordance with Screen Cosmetic Criteria (Operating) No.1.	Minor	
2	Lines	In accordance with Screen Cosmetic Criteria (Operation) No.2.	Minor	
3	Bubbles in Polarizer		Minor	
		Size: d mm		Acceptable Qty in active area
		d ≤ 0.3		Disregard
		0.3 < d ≤ 1.0		3
1.0 < d ≤ 1.5	1			
1.5 < d	0			
4	Scratch	In accordance with spots and lines operating cosmetic criteria, When the light reflects on the panel surface, the scratches are not to be remarkable.	Minor	
5	Allowable density	Above defects should be separated more than 30mm each other.	Minor	
6	Coloration	Not to be noticeable coloration in the viewing area of the LCD panels. Back-lit type should be judged with back-lit on state only.	Minor	
7	Contamination	Not to be noticeable.	Minor	



10.6 Screen Cosmetic Criteria (Operating)

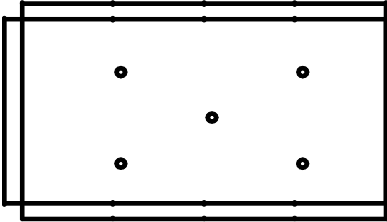
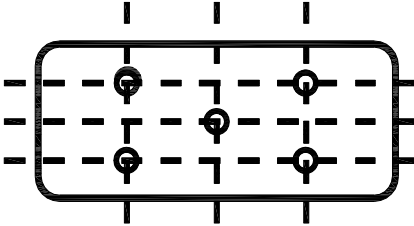
No.	Defect	Judgment Criterion	Partition	
1	Spots	A) Clear	Minor	
		Size:d mm		Acceptable Qty in active area
		$d \leq 0.1$		Disregard
		$0.1 < d \leq 0.2$		6
		$0.2 < d \leq 0.3$		2
		$0.3 < d$		0
Note: Including pin holes and defective dots which must be within one pixel Size.				
2	Lines	B) Unclear	Minor	
		Size:d mm		Acceptable Qty in active area
		$d \leq 0.2$		Disregard
		$0.2 < d \leq 0.5$		6
		$0.5 < d \leq 0.7$		2
		$0.7 < d$		0

2	Lines	A) Clear	Minor
		<p>Note: () – Acceptable Qty in active area L - Length (mm) W -Width(mm) ∞-Disregard</p>	
2	Lines	B) Unclear	Minor

'Clear' = The shade and size are not changed by Vo.

'Unclear' = The shade and size are changed by Vo.



No.	Defect	Judgment Criterion	Partition
3	Rubbing line	Not to be noticeable.	
4	Allowable density	Above defects should be separated more than 10mm each other.	Minor
5	Rainbow	Not to be noticeable.	Minor
6	Dot size	To be 95%~105%of the dot size (Typ.) in drawing.	Minor
		Partial defects of each dot (ex.pin-hole) should be treated as'spot'. (see Screen Cosmetic Criteria (Operating) No.1)	
7	Brightness (only back-lit Module)	<p>Brightness Uniformity must be $B_{MAX}/B_{MIN} \leq 2$</p> <ul style="list-style-type: none"> - B_{MAX} :Max.value by measure in 5 points - B_{MIN} : Min.value by measure in 5 points <p>Divide active area into 4 vertically and horizontally. Measure 5 points shown in the following figure.</p> 	Minor
8	Contrast Uniformity	<p>Contrast Uniformity must be $B_{mAX}/B_{mIN} \leq 2$</p> <p>Measure 5 points shown in the following figure. Dashed lines divide active area into 4 vertically and horizontally. Measuring points are located at the inter-sections of dashed line.</p>  <p>Note: B_{MAX} – Max.value by measure in 5 points. B_{MIN} – Min.value by measure in 5 points. O – Measuring points in $\phi 10mm$.</p>	Minor

Note:

- (1) Size : $d=(\text{long length} + \text{short length})/2$
- (2) The limit samples for each item have priority.
- (3) Complexed defects are defined item by item, but if the number of defects is defined in above table, the total number should not exceed 10.



(4) In case of 'concentration', even the spots or the lines of 'disregarded' size should not be allowed. Following three situations

Should be treated as 'concentration'.

- 7 or over defects in circle of \varnothing 5mm.
- 10 or over defects in circle of \varnothing 10mm
- 20 or over defects in circle of \varnothing 20mm

11. PRECAUTIONS FOR USING

11.1 Handling Precautions

- ◆ This device is susceptible to Electro-Static Discharge (ESD) damage. Observe Anti-Static precautions.
- ◆ SUR display panel is made of glass. Do not subject it to a mechanical shock by dropping it or impact. If
- ◆ SUR display panel is damaged and the liquid crystal substance leaks out, be sure not to get any in your mouth. If the substance contacts your skin or clothes, wash it off using soap and water.
- ◆ Do not apply excessive force to the SUR display surface or the adjoining areas since this may cause the color tone to vary.
- ◆ The polarizer covering the SUR display surface of the LCD module is soft and easily scratched. Handle this polarizer carefully.
- ◆ If SUR display surface becomes contaminated, breathe on the surface and gently wipe it with a soft dry cloth. If it is heavily contaminated, moisten cloth with one of the following Isopropyl or alcohol.
- ◆ Solvents other than those above-mentioned may damage the polarizer. Especially, do not use the Water.
- ◆ Exercise care to minimize corrosion of the electrode. Corrosion of the electrodes is accelerated by water droplets, moisture condensation or a current flow in a high-humidity environment.
- ◆ Install the SUR LCD Module by using the mounting holes. When mounting the LCD module make sure it is free of twisting, warping and distortion. In particular, do not forcibly pull or bend the cable or the backlight cable.
- ◆ Do not attempt to disassemble or process SUR LCD module.
- ◆ NC terminal should be open. Do not connect anything.
- ◆ If the logic circuit power is off, do not apply the input signals.
- ◆ To prevent destruction of the elements by static electricity, be careful to maintain an optimum work environment.
 - Be sure to ground the body when handling SUR LCD modules.
 - Tools required for assembling, such as soldering irons, must be properly grounded.
 - To reduce the amount of static electricity generated, do not conduct assembling and other work under dry conditions.
 - The LCD module is coated with a film to protect the display surface. Exercise care when peeling off this protective film since static electricity may be generated.



11.2 Power Supply Precautions

- ◆ Identify and, at all times, observe absolute maximum ratings for both logic and LC drivers. Note that there is some variance between models.
- ◆ Prevent the application of reverse polarity to VDD and VSS, however briefly.
- ◆ Use a clean power source free from transients. Power-up conditions are occasionally jolting and may exceed the maximum ratings of SUR modules.
- ◆ The VDD power of SUR module should also supply the power to all devices that may access the display. Don't allow the data bus to be driven when the logic supply to the module is turned off.

11.3 Operating Precautions

- ◆ DO NOT plug or unplug SUR module when the system is powered up.
- ◆ Minimize the cable length between SUR module and host MPU.
- ◆ For models with backlights, do not disable the backlight by interrupting the HV line. Unload inverters produce voltage extremes that may arc within a cable or at the display.
- ◆ Operate SUR module within the limits of the modules temperature specifications.

11.4 Mechanical/Environmental Precautions

- ◆ Improper soldering is the major cause of module difficulty. Use of flux cleaner is not recommended as they may seep under the electrometric connection and cause display failure.
- ◆ Mount SUR module so that it is free from torque and mechanical stress.
- ◆ Surface of the LCD panel should not be touched or scratched. The display front surface is an easily scratched, plastic polarizer. Avoid contact and clean only when necessary with soft, absorbent cotton dampened with petroleum benzene.
- ◆ Always employ anti-static procedure while handling SUR module.
- ◆ Prevent moisture build-up upon the module and observe the environmental constraints for storage tem
- ◆ Do not store in direct sunlight
- ◆ If leakage of the liquid crystal material should occur, avoid contact with this material, particularly ingestion. If the body or clothing becomes contaminated by the liquid crystal material, wash thoroughly with water and soap

11.5 Storage Precautions

When storing the LCD modules, avoid exposure to direct sunlight or to the light of fluorescent lamps. Keep SUR modules in bags (avoid high temperature / high humidity and low temperatures below 0C Whenever possible, SUR LCD modules should be stored in the same conditions in which they were shipped from our company.

11.6 Others

Liquid crystals solidify under low temperature (below the storage temperature range) leading to defective orientation or the generation of air bubbles (black or white). Air bubbles may also be generated if the module is subject to a low temperature.

If SUR LCD modules have been operating for a long time showing the same display patterns, the display patterns may remain on the screen as ghost images and a slight contrast irregularity may also



appear. A normal operating status can be regained by suspending use for some time. It should be noted that this phenomenon does not adversely affect performance reliability.

To minimize the performance degradation of the LCD modules resulting from destruction caused by static electricity etc., exercise care to avoid holding the following sections when handling the modules.

- Exposed area of the printed circuit board.
- Terminal electrode sections.

12 . USING LCD MODULES

12.1 Liquid Crystal Display Modules

SUR LCD is composed of glass and polarizer. Pay attention to the following items when handling.

- ◆ Please keep the temperature within specified range for use and storage. Polarization degradation, bubble generation or polarizer peel-off may occur with high temperature and high humidity.
- ◆ Do not touch, push or rub the exposed polarizers with anything harder than an HB pencil lead (glass, tweezers, etc.).
- ◆ N-hexane is recommended for cleaning the adhesives used to attach front/rear polarizers and reflectors made of organic substances which will be damaged by chemicals such as acetone, toluene, ethanol and isopropylalcohol.
- ◆ When SUR display surface becomes dusty, wipe gently with absorbent cotton or other soft material like chamois soaked in petroleum benzin. Do not scrub hard to avoid damaging the display surface.
- ◆ Wipe off saliva or water drops immediately, contact with water over a long period of time may cause deformation or color fading.
- ◆ Avoid contacting oil and fats.
- ◆ Condensation on the surface and contact with terminals due to cold will damage, stain or dirty the polarizers. After products are tested at low temperature they must be warmed up in a container before coming in contact with room temperature air.
- ◆ Do not put or attach anything on SUR display area to avoid leaving marks on.
- ◆ Do not touch the display with bare hands. This will stain the display area and degrade insulation between terminals (some cosmetics are determined to the polarizers).
- ◆ As glass is fragile. It tends to become or chipped during handling especially on the edges. Please avoid dropping or jarring.

12.2 Installing LCD Modules

- ◆ Cover the surface with a transparent protective plate to protect the polarizer and LC cell.
- ◆ When assembling the LCM into other equipment, the spacer to the bit between the LCM and the fitting plate should have enough height to avoid causing stress to the module surface, refer to the individual specifications for measurements. The measurement tolerance should be $\pm 0.1\text{mm}$.



12.3 Precaution for Handling LCD Modules

Since SUR LCM has been assembled and adjusted with a high degree of precision; avoid applying excessive shocks to the module or making any alterations or modifications to it.

- ◆ Do not alter, modify or change the shape of the tab on the metal frame.
- ◆ Do not make extra holes on the printed circuit board, modify its shape or change the positions of components to be attached.
- ◆ Do not damage or modify the pattern writing on the printed circuit board.
- ◆ Absolutely do not modify the zebra rubber strip (conductive rubber) or heat seal connector.
- ◆ Except for soldering the interface, do not make any alterations or modifications with a soldering iron.
- ◆ Do not drop, bend or twist SUR LCM.

12.4 Electro-Static Discharge Control

Since this module uses a CMOS LSI, the same careful attention should be paid to electrostatic discharge as for an ordinary CMOS IC.

- ◆ Make certain that you are grounded when handling LCM.
- ◆ Before remove LCM from its packing case or incorporating it into a set, be sure the module and your body have the same electric potential.
- ◆ When soldering the terminal of LCM, make certain the AC power source for the soldering iron does not leak.
- ◆ When using an electric screwdriver to attach LCM, the screwdriver should be of ground potentiality to minimize as much as possible any transmission of electromagnetic waves produced sparks coming from the commutator of the motor.
- ◆ As far as possible make the electric potential of your work clothes and that of the work bench the ground potential.
- ◆ To reduce the generation of static electricity be careful that the air in the work is not too dried. A relative humidity of 50%-60% is recommended.

12.5 Precaution for Soldering to SUR LCM

- ◆ Observe the following when soldering lead wire, connector cable and etc. to the LCM.

-Soldering iron temperature : $280^{\circ}\text{C} \pm 10^{\circ}\text{C}$

-Soldering time: 3-4 sec.

-Solder: eutectic solder.

If soldering flux is used, be sure to remove any remaining flux after finishing to soldering operation. (This does not apply in the case of a non-halogen type of flux.) It is recommended that you protect the LCD surface with a cover during soldering to prevent any damage due to flux spatters.

- ◆ When soldering the electroluminescent panel and PC board, the panel and board should not be detached more than three times. This maximum number is determined by the temperature and time conditions mentioned above, though there may be some variance depending on the temperature of the soldering iron.
- ◆ When remove the electroluminescent panel from the PC board, be sure the solder has completely melted, the soldered pad on the PC board could be damaged.



12.6 Precaution for Operation

- ◆ Viewing angle varies with the change of liquid crystal driving voltage (VO). Adjust VO to show the best contrast.
- ◆ Driving the SUR LCD in the voltage above the limit shortens its life.
- ◆ Response time is greatly delayed at temperature below the operating temperature range. However, this does not mean the LCD will be out of the order. It will recover when it returns to the specified temperature range.
- ◆ If SUR display area is pushed hard during operation, the display will become abnormal. However, it will return to normal if it is turned off and then back on.
- ◆ Condensation on terminals can cause an electrochemical reaction disrupting the terminal circuit. Therefore, it must be used under the relative condition of 40°C, 50% RH.
- ◆ When turning the power on, input each signal after the positive/negative voltage becomes stable.

12.7 Limited Warranty

Unless agreed between SUR and customer, SUR will replace or repair any of its LCD modules which are found to be functionally defective when inspected in accordance with SUR LCD acceptance standards (copies available upon request) for a period of one year from date of shipments. Cosmetic/visual defects must be returned to SUR within 90 days of shipment. Confirmation of such date shall be based on freight documents. The warranty liability of SUR limited to repair and/or replacement on the terms set forth above. SUR will not be responsible for any subsequent or consequential events.

12.8 Return Policy

No warranty can be granted if the precautions stated above have been disregarded. The typical examples of violations are:

- Broken LCD glass.
- PCB eyelet damaged or modified.
- PCB conductors damaged.
- Circuit modified in any way, including addition of components.
- PCB tampered with by grinding, engraving or painting varnish.
- Soldering to or modifying the bezel in any manner.

Module repairs will be invoiced to the customer upon mutual agreement. Modules must be returned with sufficient description of the failures or defects. Any connectors or cable installed by the customer must be removed completely without damaging the PCB eyelet's, conductors and terminals

That's the end of the datasheet