



# SURENOO GRAPHIC OLED SERIES DISPLAY

## Product Specification

(Preliminary)

Part Name: OEL Display Module

SOG320132A\_M383

Please click the following image to buy the sample



Business Card



Wechat Card

Shenzhen Surenoo Technology Co.,Ltd.

[www.surenoo.com](http://www.surenoo.com)

E-mail: [info@surenoo.com](mailto:info@surenoo.com)

Skype: Surenoo365

**Graphic OLED Display Selection Guide**

**SSD1320**





## TABLE OF Contents

Part Name: OLED Display Module.....	1
TABLE OF Contents.....	3
1. Basic Specifications.....	4
1.1 Display Specifications.....	4
1.2 Mechanical Specifications.....	4
1.3 Active Area / Memory Mapping & Pixel Construction.....	4
1.4 Mechanical Drawing.....	5
1.5 Pin Definition.....	6
1.6 product picture.....	6
1.7 Schematic Diagram.....	7
2. Absolute Maximum Ratings.....	8
3. Optics & Electrical Characteristics.....	9
3.1 Optics Characteristics.....	9
3.2 DC Characteristics.....	10
3.3 AC Characteristics.....	11
3.3.1 SPI Interface Timing Characteristics:.....	11
4. The appendix.....	12
5. Reliability.....	15
5.1 Contents of Reliability Tests.....	15
5.2 Failure Check Standard.....	15
6. Outgoing Quality Control Specifications.....	16
6.1 Environment Required.....	16
6.2 Sampling Plan.....	16
6.3 Criteria & Acceptable Quality Level.....	16
6.3.1 Cosmetic Check (Display Off) in Non-Active Area.....	17
6.3.2 Cosmetic Check (Display Off) in Active Area.....	17
6.3.3 Pattern Check (Display On) in Active Area.....	19
7. Precautions When Using These OEL Display Modules.....	20
7.1 Handling Precautions.....	20
7.2 Storage Precautions.....	21
7.3 Designing Precautions.....	21
7.4 Precautions when disposing of the OEL display modules.....	22
7.5 Other Precautions.....	22
<b>Notice:</b> .....	23



# 1. Basic Specifications

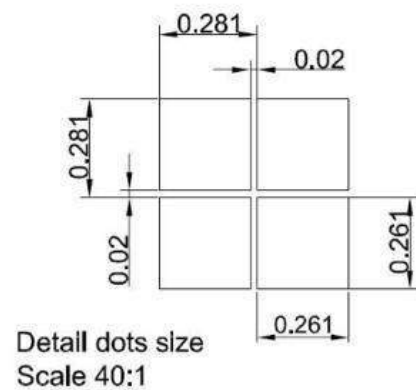
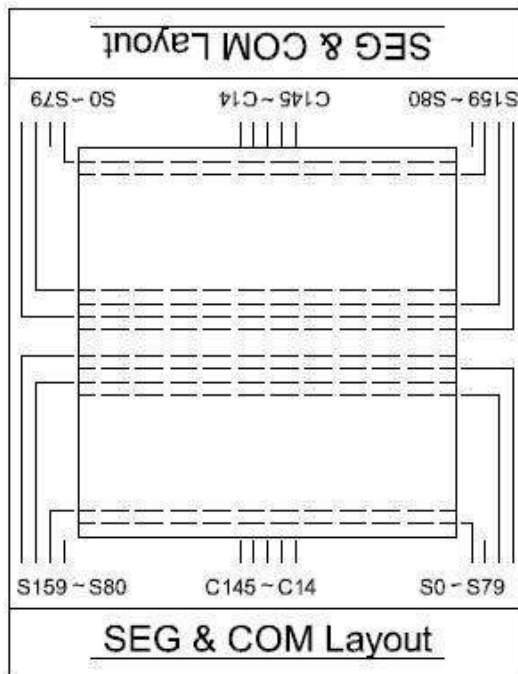
## 1.1 Display Specifications

- 1) Display Mode: Passive Matrix
- 2) Display Color: Monochrome (White)
- 3) Drive Duty: 1/132 Duty

## 1.2 Mechanical Specifications

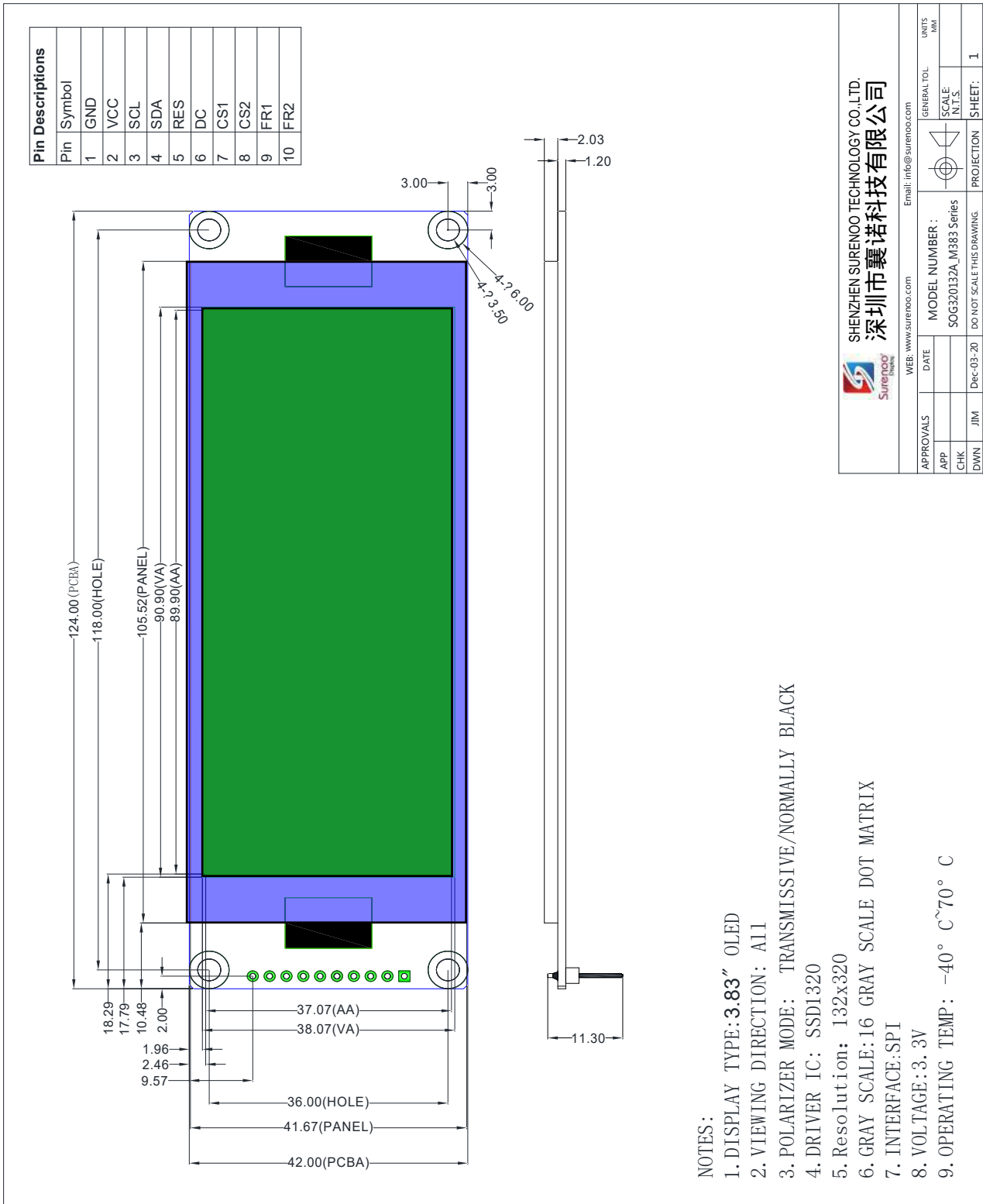
- 1) Outline Drawing: According to the annexed outline drawing
- 2) Number of Pixels: 320 × 132
- 3) PCB Size: 124.00×42.00× 3.23 (mm)
- 4) Active Area: 89.9 × 37.07 (mm)
- 5) Pixel Pitch: 0.281 × 0.281 (mm)
- 6) Pixel Size: 0.261 × 0.261 (mm)


## 1.3 Active Area / Memory Mapping & Pixel Construction





### 1.4 Mechanical Drawing



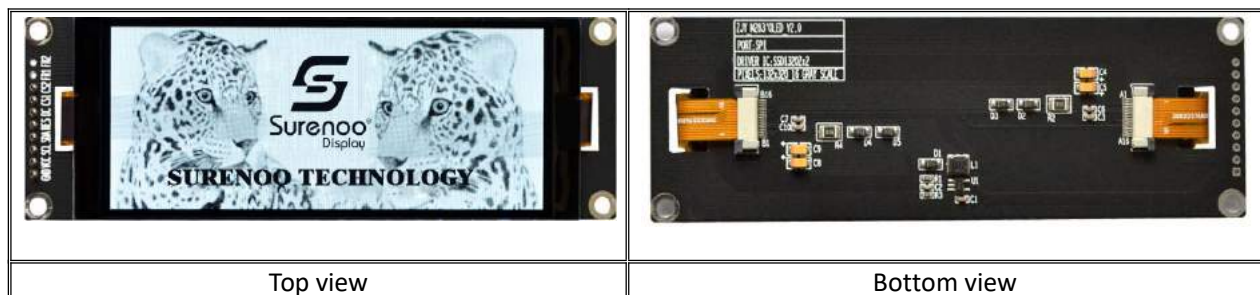
 SHENZHEN SURENOO TECHNOLOGY CO.,LTD. 深圳市襄诺科技有限公司 WEB: www.surenoo.com    Email: info@surenoo.com				
APPROVALS	DATE	MODEL NUMBER :	GENERAL TOL	UNITS
APP		SOG320132A_M383 Series	SCALE:	MM
CHK			N.T.S.	
DWN	JIM	Dec-03-20	DO NOT SCALE THIS DRAWING	PROJECTION
				SHEET: 1



## 1.5 Pin Definition

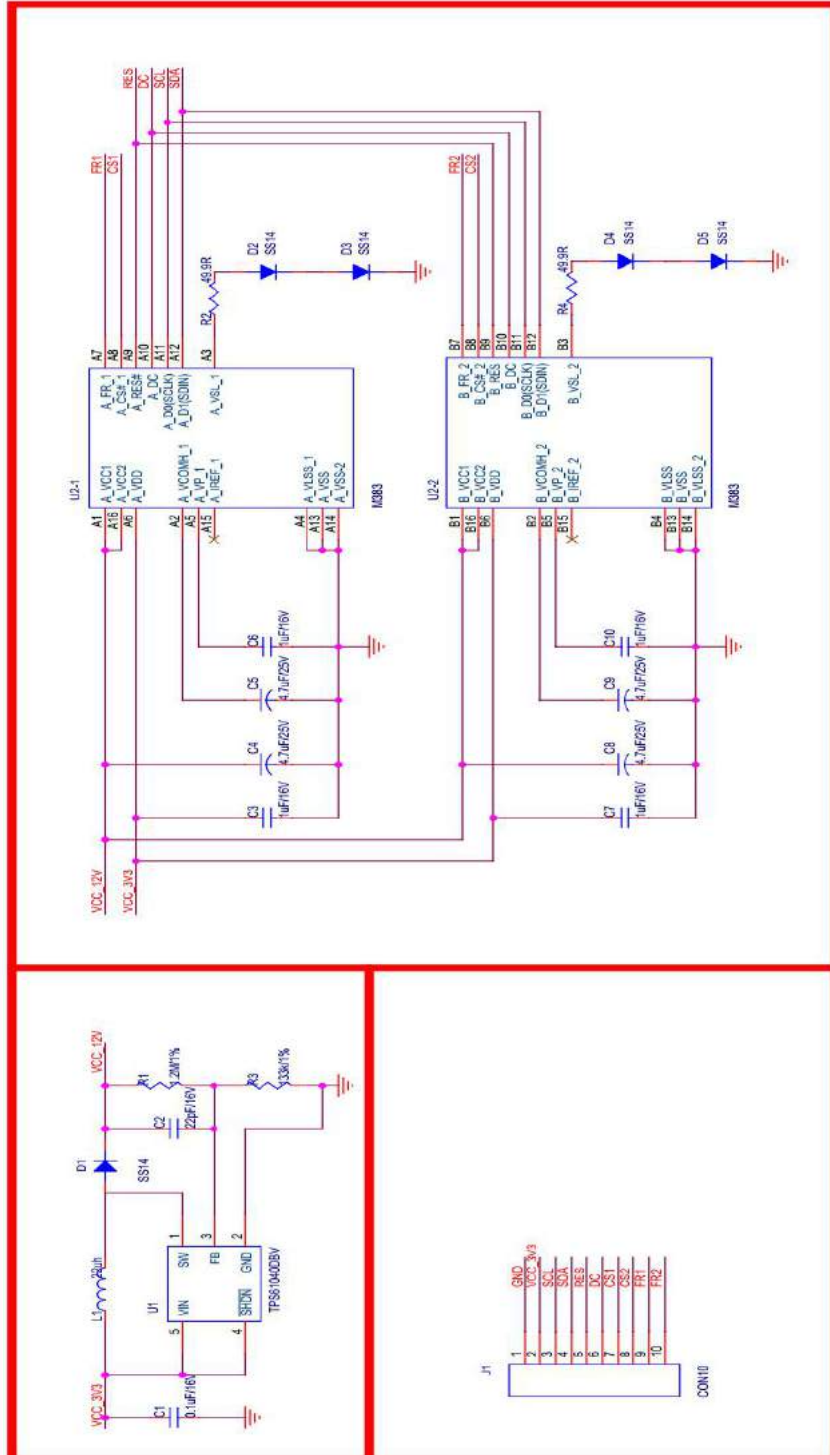
PIN No.	Symbol	Description
1	GND	<b>Ground of Logic Circuit</b> This is a ground pin. It must be connected to ground
2	VCC	<b>Power Supply for OLED</b> This is a voltage supply pin. It must be connected to source
3	SCL	<b>The serial clock input SCL</b>
4	SDA	<b>The serial data input SDA</b>
5	RES	<b>Power Reset for Controller and Driver</b> This pin is reset signal input. When the pin is low, initialization of the chip is executed. Keep this pin pull high during normal operation
6	DC	<b>Data/Command Control</b> This pin is Data/Command control pin. When the pin is pulled high, the input at SDA is treated as display data. When the pin is pulled low, the input at SDA will be transferred to the command register.
7	CS1	<b>Chip Select</b> This pin is the chip select pin. Low enable, high disable.
8	CS2	<b>Chip Select</b> This pin is the chip select pin. Low enable, high disable.
9	FR1	NC
10	FR2	NC

## 1.6 product picture





### 1.7 Schematic Diagram





## 2. Absolute Maximum Ratings

Parameter	Symbol	Min	Max	Unit	Notes
Supply Voltage for Operation	V <sub>CI</sub>	-0.3	4	V	1, 2
Supply Voltage for Logic	V <sub>DD</sub>	-0.5	2.75	V	1, 2
Supply Voltage for I/O Pins	V <sub>DDIO</sub>	-0.5	V <sub>CI</sub>	V	1, 2
Supply Voltage for Display	V <sub>CC</sub>	-0.5	16	V	1, 2
Operating Current for V <sub>CC</sub>	I <sub>CC</sub>	-	60	mA	1, 2
Operating Temperature	T <sub>OP</sub>	-40	70	°C	3
Storage Temperature	T <sub>STG</sub>	-40	85	°C	3
Life Time (110 cd/m <sup>2</sup> )		15000	-	hour	4
Life Time (90 cd/m <sup>2</sup> )		20,000	-	hour	4

Note 1: All the above voltages are on the basis of “V<sub>SS</sub> = 0V”.

Note 2: When this module is used beyond the above absolute maximum ratings, permanent breakage of the module may occur. Also, for normal operations, it is desirable to use this module under the conditions according to Section 3. “Optics & Electrical Characteristics”. If this module is used beyond these conditions, malfunctioning of the module can occur and the reliability of the module may deteriorate.

Note 3: The defined temperature ranges do not include the polarizer. The maximum withstood temperature of the polarizer should be 80°C.

Note 4: V<sub>CC</sub> = 13.0V, T<sub>a</sub> = 25°C, 50% Checkerboard.

Software configuration follows Section 4.2 Initialization.

End of lifetime is specified as 50% of initial brightness reached. The average operating lifetime at room temperature is estimated by the accelerated operation at high temperature conditions.





## 3. Optics & Electrical Characteristics

### 3.1 Optics Characteristics

SYMBOL	PARAMETER	TEST CONDITION	MIN	TYP	MAX	UNIT
V <sub>CC</sub>	Operating Voltage (for OLED panel)	T <sub>a</sub> = 25°C	12.5	-	13.5	V
V <sub>DD</sub>	Digital power supply	T <sub>a</sub> = 25°C	1.65	2.8	3.5	V
V <sub>OH</sub>	High Logic Output Level	I <sub>OUT</sub> = 100uA, 10MHz	0.9* V <sub>DD</sub>	-	V <sub>DD</sub>	V
V <sub>OL</sub>	Low Logic Output Level	I <sub>OUT</sub> = 100uA, 10MHz	0	-	0.1*V <sub>DD</sub>	V
V <sub>IH</sub>	High Logic Input Level	-	0.8* V <sub>DD</sub>	-	V <sub>DD</sub>	V
V <sub>IL</sub>	Low Logic Input Level	-	0	-	0.2*V <sub>DD</sub>	V



### 3.2 DC Characteristics

PARAMETER	MIN	TYP.	MAX	UNITS	COMMENTS
Normal mode current (ICC)	-	95	99	mA	All pixels on (1)
	-	48	50	mA	50% pixels on (1)
	-	20	21	mA	20% pixels on (1)
Standby mode current (ICC)	-	3	3.5	mA	Standby mode 10% pixels on (2)
Normal mode power consumption	-	1235	1287	mW	All pixels on (1)
	-	624	650	mW	50% pixels on (1)
	-	260	273	mW	20% pixels on (1)
Standby mode power consumption	-	39	45.5	mW	Standby mode 10% pixels on (2)
IDD sleep mode current	-	-	0.1	mA	Sleep mode Current (3)
ICC sleep mode current	-	-	0.1	mA	Sleep mode Current (3)
Normal Luminance	90	110	-	cd/m <sup>2</sup>	Display Average
Standby Luminance	-	10	-	cd/m <sup>2</sup>	
CIE <sub>x</sub> (White)	0.26	0.30	0.34		CIE1931
CIE <sub>y</sub> (White)	0.29	0.33	0.37		CIE1931
Dark Room Contrast	10000:1				
Viewing Angle	160			degree	
Response Time		10		μs	

Note:

- (A) Under V<sub>cc</sub> = 13V
- (B) Frame rate : 85Hz
- (C) Duty setting : 1/132



### 3.3AC Characteristics

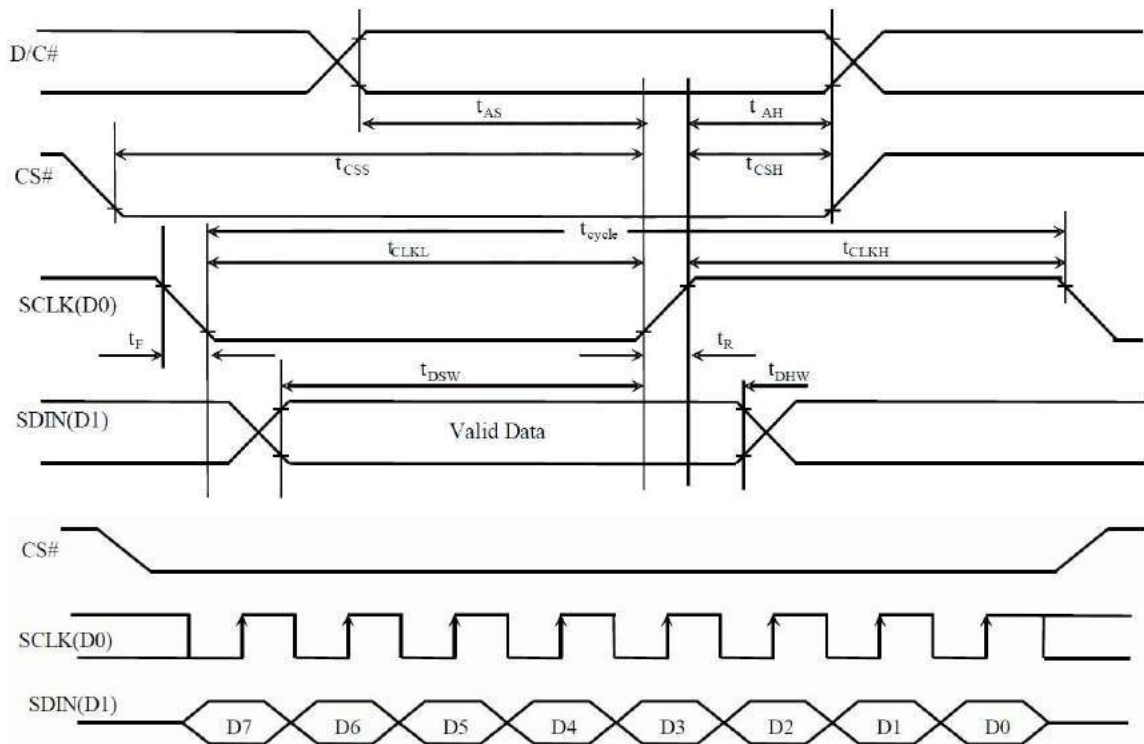
#### 3.3.1 SPI Interface Timing Characteristics:

Table Serial Interface Timing Characteristics (4-wire SPI)

( $V_{DD} - V_{SS} = 1.65V \sim 3.5V$ ,  $T_A = 25^\circ C$ )

Symbol	Parameter	Min	Typ	Max	Unit
$t_{cycle}$	Clock Cycle Time	66	-	-	ns
$t_{AS}$	Address Setup Time	15	-	-	ns
$t_{AH}$	Address Hold Time	15	-	-	ns
$t_{CSS}$	Chip Select Setup Time	20	-	-	ns
$t_{CSH}$	Chip Select Hold Time	10	-	-	ns
$t_{DSW}$	Write Data Setup Time	15	-	-	ns
$t_{DHW}$	Write Data Hold Time	15	-	-	ns
$t_{CLKL}$	Clock Low Time	20	-	-	ns
$t_{CLKH}$	Clock High Time	20	-	-	ns
$t_R$	Rise Time	-	-	15	ns
$t_F$	Fall Time	-	-	15	ns

Figure Serial interface characteristics (4-wire SPI)





```
void OLED_Init(void)
{
    //OLED 复位
    OLED_RES_Clr();//RES 置 0
    delay_ms(200);//延时 200ms
    OLED_RES_Set();//RES 置 1

    //OLED 初始化
    OLED_WR_Byte(0xae,OLED_CMD);//Display OFF
    OLED_WR_Byte(0xfd,OLED_CMD);//Set Command Lock
    OLED_WR_Byte(0x12,OLED_CMD);
    OLED_WR_Byte(0x20,OLED_CMD);//Set Memory Addressing Mode
    OLED_WR_Byte(0x00,OLED_CMD);
    OLED_WR_Byte(0x25,OLED_CMD);//Set Portrait Addressing Mode
    OLED_WR_Byte(0x00,OLED_CMD);//Normal Addressing Mode
    OLED_WR_Byte(0x81,OLED_CMD);//Set Contrast Control
    OLED_WR_Byte(0x6b,OLED_CMD);
    OLED_WR_Byte1(0xa0,OLED_CMD,1);//Set Seg Remap
    OLED_WR_Byte1(0xa1,OLED_CMD,2);
    OLED_WR_Byte(0xa2,OLED_CMD);//Set Display Start Line
    OLED_WR_Byte(0x00,OLED_CMD);
    OLED_WR_Byte(0xa4,OLED_CMD);//Resume to RAM content display
    OLED_WR_Byte(0xa6,OLED_CMD);//Set Normal Display
    OLED_WR_Byte(0xa8,OLED_CMD);//Set MUX Ratio
    OLED_WR_Byte(0x83,OLED_CMD);//1/132 duty
    OLED_WR_Byte(0xad,OLED_CMD);//Select external or internal IREF
    OLED_WR_Byte(0x10,OLED_CMD);
    OLED_WR_Byte(0xbc,OLED_CMD);//Set Pre-charge voltage
    OLED_WR_Byte(0x1e,OLED_CMD);//
    OLED_WR_Byte(0xbf,OLED_CMD);//Linear LUT
    OLED_WR_Byte1(0xc8,OLED_CMD,1);//Set COM Output Scan Direction
    OLED_WR_Byte1(0xc0,OLED_CMD,2);
    OLED_WR_Byte(0xd3,OLED_CMD);//Set Display Offset
    OLED_WR_Byte1(0x0e,OLED_CMD,1);
    OLED_WR_Byte1(0x92,OLED_CMD,2);
    OLED_WR_Byte(0xd5,OLED_CMD);//Set Display Clock Divide Ratio/Oscillator Frequency
    OLED_WR_Byte(0xc2,OLED_CMD);//85Hz
    OLED_WR_Byte(0xd9,OLED_CMD);//Set Pre-charge Period
```



```
OLED_WR_Byte(0x72,OLED_CMD);//  
OLED_WR_Byte(0xda,OLED_CMD);//Set SEG Pins Hardware Configuration  
OLED_WR_Byte(0x32,OLED_CMD);  
OLED_WR_Byte(0xbd,OLED_CMD);//Set VP  
OLED_WR_Byte(0x03,OLED_CMD);  
OLED_WR_Byte(0xdb,OLED_CMD);//Set VCOMH  
OLED_WR_Byte(0x30,OLED_CMD);  
OLED_Clear(0,0,320,132,0x00);  
OLED_WR_Byte(0xaf,OLED_CMD);//Display on}
```

```
#define OLED_CMD  0  //write command  
#define OLED_DATA 1  //write data
```

```
void OLED_WR_Byte(u8 dat,u8 cmd)
```

```
{  
    u8 i;  
    if(cmd)  
        OLED_DC_Set();  
    else  
        OLED_DC_Clr();  
    OLED_CS1_Clr();  
    OLED_CS2_Clr();  
    for(i=0;i<8;i++)  
    {  
        OLED_SCLK_Clr();  
        if(dat&0x80)  
            OLED_SDIN_Set();  
        else  
            OLED_SDIN_Clr();  
        OLED_SCLK_Set();  
        dat<<=1;  
    }  
    OLED_CS1_Set();  
    OLED_CS2_Set();  
    OLED_DC_Set();  
}
```

```
void OLED_WR_Byte1(u8 dat,u8 cmd,u8 mode)
```

```
{  
    u8 i;  
    if(cmd)  
        OLED_DC_Set();  
    else  
        OLED_DC_Clr();  
}
```



```
if(mode==1)OLED_CS1_Clr();
if(mode==2)OLED_CS2_Clr();
for(i=0;i<8;i++)
{
    OLED_SCLK_Clr();
    if(dat&0x80)
        OLED_SDIN_Set();
    else
        OLED_SDIN_Clr();
    OLED_SCLK_Set();
    dat<<=1;
}
if(mode==1)OLED_CS1_Set();
if(mode==2)OLED_CS2_Set();
OLED_DC_Set();
}
```



## 5. Reliability

### 5.1 Contents of Reliability Tests

Item	Conditions	Criteria
High Temperature Operation	70°C, 240 hrs	The operational functions work.
Low Temperature Operation	-40°C, 240 hrs	
High Temperature Storage	85°C, 240 hrs	
Low Temperature Storage	-40°C, 240 hrs	
High Temperature/Humidity Operation	60°C, 90% RH, 120 hrs	
Thermal Shock	-40°C ↔ 85°C, 24 cycles 60 mins dwell	

- \* The samples used for the above tests do not include polarizer.
- \* No moisture condensation is observed during tests.

### 5.2 Failure Check Standard

After the completion of the described reliability test, the samples were left at room temperature for 2 hrs prior to conducting the failure test at 23±5°C; 55±15% RH.



## 6. Outgoing Quality Control Specifications

### 6.1 Environment Required

Customer's test & measurement are required to be conducted under the following conditions:

- Temperature:  $23 \pm 5^{\circ}\text{C}$
- Humidity:  $55 \pm 15\% \text{ RH}$
- Fluorescent Lamp: 30W
- Distance between the Panel & Lamp:  $\geq 50\text{cm}$
- Distance between the Panel & Eyes of the Inspector:  $\geq 30\text{cm}$
- Finger glove (or finger cover) must be worn by the inspector.
- Inspection table or jig must be anti-electrostatic.

### 6.2 Sampling Plan

Level II, Normal Inspection, Single Sampling, MIL-STD-105E

### 6.3 Criteria & Acceptable Quality Level

Partition	AQL	Definition
Major	0.65	Defects in Pattern Check (Display On)
Minor	1.0	Defects in Cosmetic Check (Display Off)





6.3.1 Cosmetic Check (Display Off) in Non-Active Area

Check Item	Classification	Criteria
Panel General Chipping	Minor	<p>X &gt; 6 mm (Along with Edge)            Y &gt; 1 mm (Perpendicular to edge)</p>

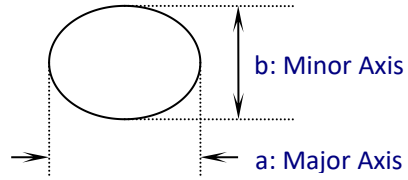
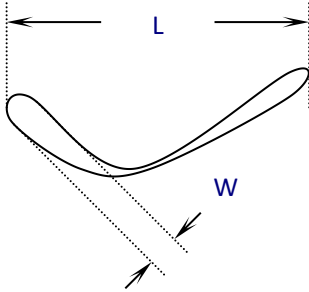
6.3.2 Cosmetic Check (Display Off) in Active Area

It is recommended to execute in clear room environment (class 10k) if actual in necessary.

Check Item	Classification	Criteria
Any Dirt & Scratch on Polarizer's Protective Film	Acceptable	Ignore for not Affect the Polarizer
Scratches, Fiber, Line-Shape Defect (On Polarizer)	Minor	$W \leq 0.1$ Ignore $W > 0.1$ $L \leq 2$ $n \leq 1$ $L > 2$ $n = 0$
Dirt, Black Spot, Foreign Material, (On Polarizer)	Minor	$\Phi \leq 0.1$ Ignore $0.1 < \Phi \leq 0.25$ $n \leq 1$ $0.25 < \Phi$ $n = 0$
Dent, Bubbles, White spot (Any Transparent Spot on Polarizer)	Minor	$\Phi \leq 0.5$ → Ignore if no Influence on Display $0.5 < \Phi$ $n = 0$
Fingerprint, Flow Mark (On Polarizer)	Minor	Not Allowable

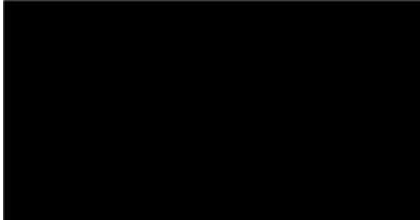
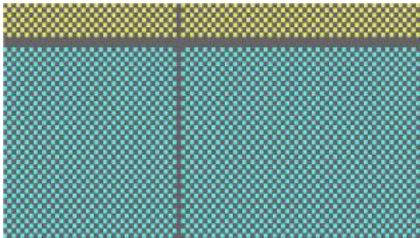
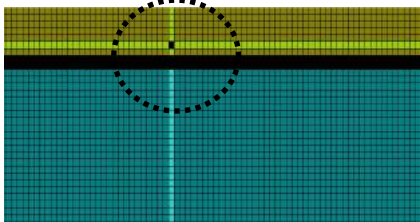
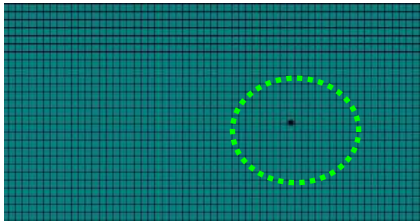
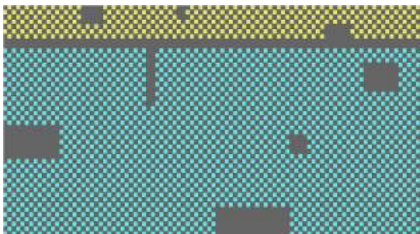


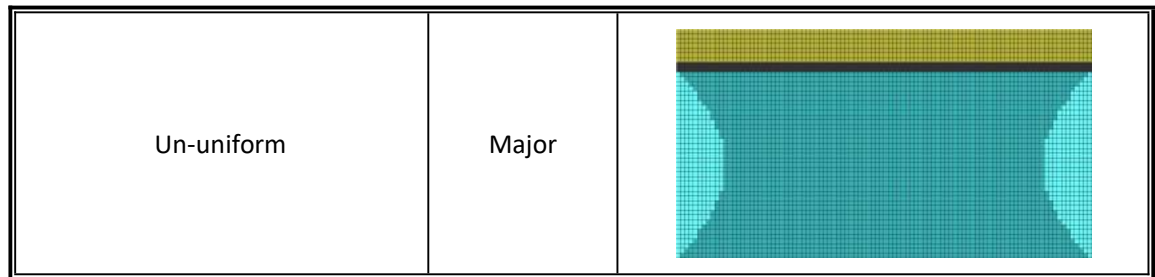
- \* Protective film should not be tear off when cosmetic check.
- \*\* Definition of W & L &  $\Phi$  (Unit: mm):  $\Phi = (a + b) / 2$





### 6.3.3 Pattern Check (Display On) in Active Area

Check Item	Classification	Criteria
No Display	Major	
Missing Line	Major	
Pixel Short	Major	
Darker Pixel	Major	
Wrong Display	Major	



## 7. Precautions When Using These OEL Display Modules

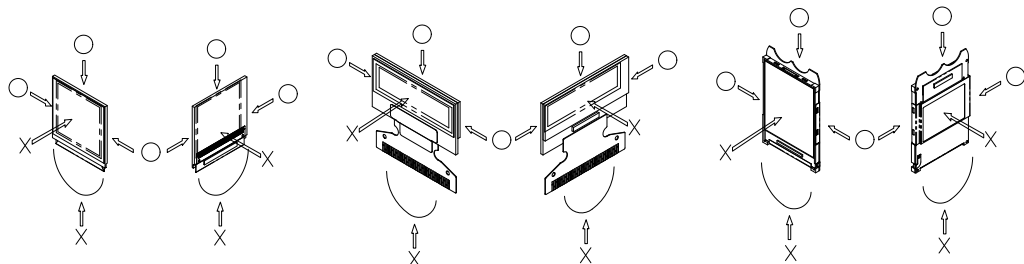
### 7.1 Handling Precautions

- 1) Since the display panel is being made of glass, do not apply mechanical impacts such as dropping from a high position.
- 2) If the display panel is broken by some accident and the internal organic substance leaks out, be careful not to inhale nor lick the organic substance.
- 3) If pressure is applied to the display surface or its neighborhood of the OEL display module, the cell structure may be damaged and be careful not to apply pressure to these sections.
- 4) The polarizer covering the surface of the OEL display module is soft and easily scratched. Please be careful when handling the OEL display module.
- 5) When the surface of the polarizer of the OEL display module has soil, clean the surface. It takes advantage of by using following adhesion tape.
  - \* Scotch Mending Tape No. 810 or an equivalent

Never try to breathe upon the soiled surface nor wipe the surface using cloth containing solvent such as ethyl alcohol, since the surface of the polarizer will become cloudy.

Also, pay attention that the following liquid and solvent may spoil the polarizer:

- \* Water
  - \* Ketone
  - \* Aromatic Solvents
- 6) Hold OEL display module very carefully when placing OEL display module into the system housing. Do not apply excessive stress or pressure to OEL display module. And, do not over bend the film with electrode pattern layouts. These stresses will influence the display performance. Also, secure sufficient rigidity for the outer cases.



- 7) Do not apply stress to the driver IC and the surrounding molded sections.
- 8) Do not disassemble nor modify the OEL display module.



- 9) Do not apply input signals while the logic power is off.
- 10) Pay sufficient attention to the working environments when handing OEL display modules to prevent occurrence of element breakage accidents by static electricity.
  - \* Be sure to make human body grounding when handling OEL display modules.
  - \* Be sure to ground tools to use or assembly such as soldering irons.
  - \* To suppress generation of static electricity, avoid carrying out assembly work under dry environments.
  - \* Protective film is being applied to the surface of the display panel of the OEL display module. Be careful since static electricity may be generated when exfoliating the protective film.
- 11) Protection film is being applied to the surface of the display panel and removes the protection film before assembling it. At this time, if the OEL display module has been stored for a long period of time, residue adhesive material of the protection film may remain on the surface of the display panel after removed of the film. In such case, remove the residue material by the method introduced in the above Section 5).
- 12) If electric current is applied when the OEL display module is being dewed or when it is placed under high humidity environments, the electrodes may be corroded and be careful to avoid the above.

## 7.2 Storage Precautions

- 1) When storing OEL display modules, put them in static electricity preventive bags avoiding exposure to direct sun light nor to lights of fluorescent lamps. and, also, avoiding high temperature and high humidity environment or low temperature (less than 0 ° C) environments. (We recommend you to store these modules in the packaged state when they were shipped from ZhongJingYuan technology Co.,Ltd.)

At that time, be careful not to let water drops adhere to the packages or bags nor let dewing occur with them.

- 2) If electric current is applied when water drops are adhering to the surface of the OEL display module, when the OEL display module is being dewed or when it is placed under high humidity environments, the electrodes may be corroded and be careful about the above.

## 7.3 Designing Precautions

- 1) The absolute maximum ratings are the ratings which cannot be exceeded for OEL display module, and if these values are exceeded, panel damage may be happen.
- 2) To prevent occurrence of malfunctioning by noise, pay attention to satisfy the  $V_{IL}$  and  $V_{IH}$  specifications and, at the same time, to make the signal line cable as short as possible.
- 3) We recommend you to install excess current preventive unit (fuses, etc.) to the power circuit ( $V_{DD}$ ). (Recommend value: 0.5A)
- 4) Pay sufficient attention to avoid occurrence of mutual noise interference with the neighboring devices.
- 5) As for EMI, take necessary measures on the equipment side basically.
- 6) When fastening the OEL display module, fasten the external plastic housing section.



- 7) If power supply to the OEL display module is forcibly shut down by such errors as taking out the main battery while the OEL display panel is in operation, we cannot guarantee the quality of this OEL display module.
  - 8) The electric potential to be connected to the rear face of the IC chip should be as follows:  
SSD1306
- \* Connection (contact) to any other potential than the above may lead to rupture of the IC.

## 7.4 Precautions when disposing of the OEL display modules

- 1) Request the qualified companies to handle industrial wastes when disposing of the OEL display modules. Or, when burning them, be sure to observe the environmental and hygienic laws and regulations.

## 7.5 Other Precautions

- 1) When an OEL display module is operated for a long of time with fixed pattern may remain as an after image or slight contrast deviation may occur.  
Nonetheless, if the operation is interrupted and left unused for a while, normal state can be restored. Also, there will be no problem in the reliability of the module.
  - 2) To protect OEL display modules from performance drops by static electricity rapture, etc., do not touch the following sections whenever possible while handling the OEL display modules.
    - \* Pins and electrodes
    - \* Pattern layouts such as the FPC
  - 3) With this OEL display module, the OEL driver is being exposed. Generally speaking, semiconductor elements change their characteristics when light is radiated according to the principle of the solar battery. Consequently, if this OEL driver is exposed to light, malfunctioning may occur.
- \* Design the product and installation method so that the OEL driver may be shielded from light in actual usage.
- \* Design the product and installation method so that the OEL driver may be shielded from light during the inspection processes.
- 4) Although this OEL display module stores the operation state data by the commands and the indication data, when excessive external noise, etc. enters into the module, the internal status may be changed. It therefore is necessary to take appropriate measures to suppress noise generation or to protect from influences of noise on the system design.
  - 5) We recommend you to construct its software to make periodical refreshment of the operation statuses (re-setting of the commands and re-transference of the display data) to cope with catastrophic noise.



**Warranty:**

The warranty period shall last twelve (12) months from the date of delivery. Buyer shall be completed to assemble all the processes within the effective twelve (12) months. Shenzhen Surenoo technology Co.,Ltd. shall be liable for replacing any products which contain defective material or process which do not conform to the product specification, applicable drawings and specifications during the warranty period. All products must be preserved, handled and appearance to permit efficient handling during warranty period. The warranty coverage would be exclusive while the returned goods are out of the terms above.

**Notice:**

No part of this material may be reproduced or duplicated in any form or by any means without the written permission of Shenzhen Surenoo Technology Co.,Ltd. Shenzhen Surenoo Technology Co.,Ltd. reserves the right to make changes to this material without notice. Shenzhen Surenoo Technology Co.,Ltd. does not assume any liability of any kind arising out of any inaccuracies contained in this material or due to its application or use in any product or circuit and, further, there is no representation that this material is applicable to products requiring high level reliability, such as, medical products. Moreover, no license to any intellectual property rights is granted by implication or otherwise, and there is no representation or warranty that anything made in accordance with this material will be free from any patent or copyright infringement of a third party. This material or portions thereof may contain technology or the subject relating to strategic products under the control of Foreign Exchange and Foreign Trade Law of Taiwan and may require an export license from the Ministry of International Trade and Industry or other approval from another government agency.